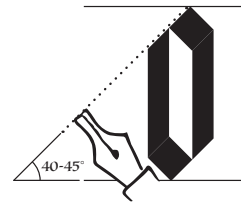


Calligraphy Workshop - Gothic script

Lesson 1: Pen Angle

The nib of the pen is wide and flat, so it draws thin lines if moved side-to-side and thick lines if moved up and down.

The pen angle should be about 40°.



Practice drawing a zig-zag. The upward stroke should be as thin as possible and the down stroke should be as thick as possible.



Lesson 2: Basic pen strokes

The Gothic script can mostly be written using just three types of pen stroke: a down-stroke, across-stroke and a diagonal.

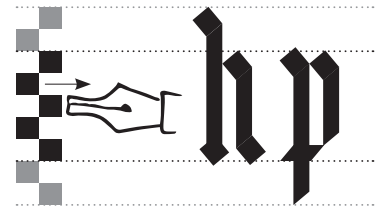
Practice the down-stroke and the diagonal stroke. Notice how the angle of the pen gives you angled ends to the strokes and a diamond shape to the diagonal stroke.



Lesson 3: Letter height

The height of the letters depends on the size of your nib. The correct line height should be the same as your nib width multiplied by five, with descenders and ascenders being an extra two nib widths.

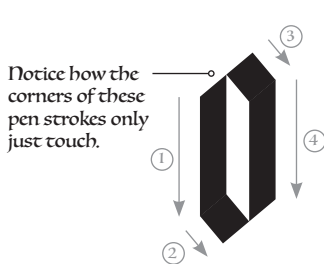
Find your line height by turning your pen so it draws the thickest line going horizontally and drawing the five squares.



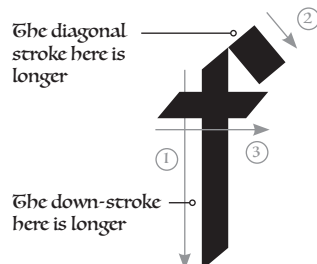
Lesson 4: Forming the letters

All letters are formed using just these few repeating shapes in different order and lengths.

Practice forming the letters in the Gothic Script Guide by following the order and direction of the arrows. Remember to lift the pen off the page between each stroke.

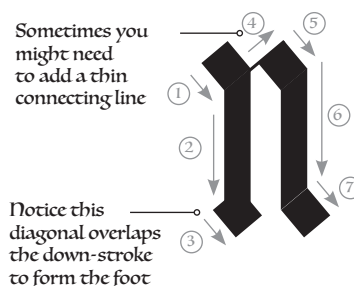


Notice how the corners of these pen strokes only just touch.



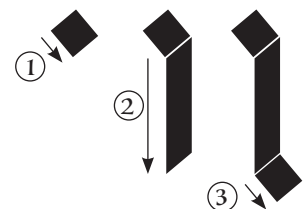
The diagonal stroke here is longer

The down-stroke here is longer



Sometimes you might need to add a thin connecting line

Notice this diagonal overlaps the down-stroke to form the foot



Common mistakes

There are a few common mistakes. If you are struggling, check your letters to see if they look like one of these issues, and see if you can correct it.

